



ACCUMETER

UV Radiometer

OLEC's state-of-the-art AccuMeter is an integrating radiometer designed to measure UV energy with accurate and repeatable results. AccuMeter comes equipped with a two-row, 16-character liquid-crystal display for maximum ease-of-use by the operator. The compact AccuMeter offers a wide range of standard and optional features.

Versatility

With AccuMeter, set-up times are dramatically reduced. The probe can be sent into a curing unit or check each corner of a vacuum frame with ease. It accurately displays exposure diagnostics, has a built-in data logging feature, and stores up to 300 readings. Plus, AccuMeter measures both miliWatts and miliJoules in two spectral ranges—340-390nm 380-420nm.

Process Control

Reduces Setup Time

Exposure Diagnostics

Built-in Data Logging

Measures 2 Spectra

MilliWatt & MilliJoule



APPLICATIONS

- Printed-circuit resists
- Flexo plates
- UV ink and other curing
- Graphic arts film, plates, and proofing
- Screenprint emulsions and curing
- Photochemical machining



ACCUMETER SPECIFICATIONS

FEATURES

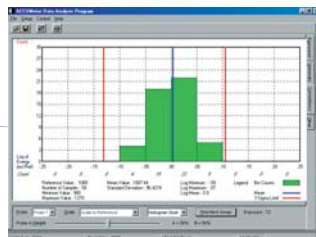
- Two channels, each measuring two spectral ranges
- Records milliWatt/cm² in for both channels in two spectral ranges
- Records milliJoule/cm² in for both channels in two spectral ranges
- Actual seconds elapsed for exposure time
- Records peak milliWatt intensities for both channels in 2 spectral ranges
- Ratio of relative intensity between both spectral ranges
- Electronic calibration
- Low-battery indicator
- User replaceable AA batteries
- Comprehensive manual and handy carrying case

OPTIONS

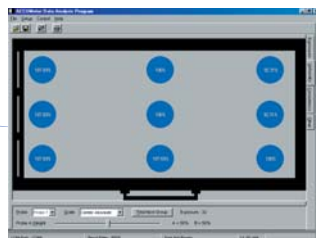
- Software package including Statistical Process Control, Histogram, and Uniformity, plus storage and retrieval of historical data
- Ability to chart a series of exposures to measure repeatability
- Ability to work under vacuum or through UV curing conveyor
- Ability to download to printer or computer for SPC via interface serial computer cable
- AC Power supply



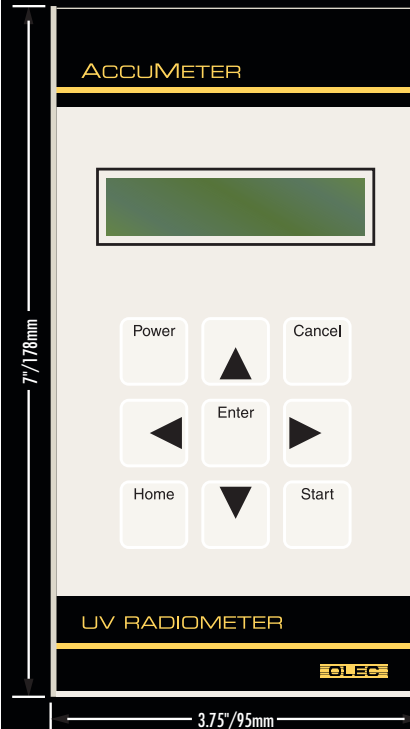
Statistical Process Control



Histogram



Uniformity



Face



Back



.11" / 2.79mm

Probe



1850 E. St. Andrew Place, Santa Ana, CA 92705, USA
 Phone 714 258 5600 • Fax 714 258 5601
 Email info@olec.com • www.olec.com