



AX28

Automated Exposure Platform

AX28, OLEC's innovative automated exposure system for imaging printed circuit boards, is simple to operate yet employs some of the most advanced features available today.

Versatility

The AX28's modular design offers a choice of mechanical, patented laser, or optical registration system. Its open architecture allows a variety of standard configurations including conveyor, reel-to-reel, and cassette. In addition, its sliding doors give greater operator accessibility without the need for additional floor space.

Easy-access programming, point-source or hybrid-collimation optics, and a unique pre-registration conveyor system are but a few of the many additional features that make the AX28 the finest choice for printed circuit fabricators worldwide.

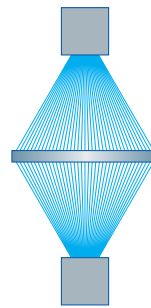
Modular Design

High-resolution Optics

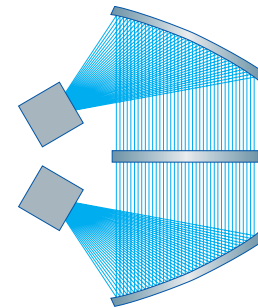
Precision Registration

Automatic Alignment

Programmable Configuration



Point Source



Hybrid Collimation



AX28 SPECIFICATIONS

Application

- Dry film or liquid photoresist
- One-sided or two-sided exposure

Registration

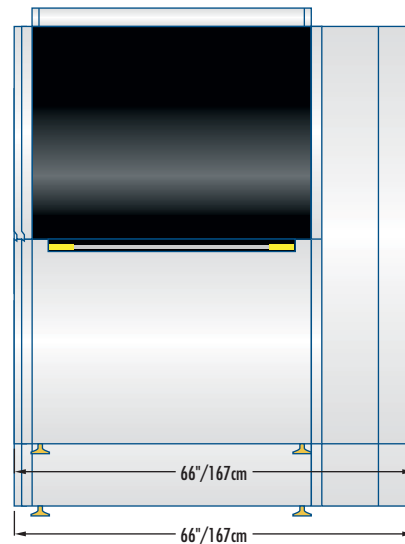
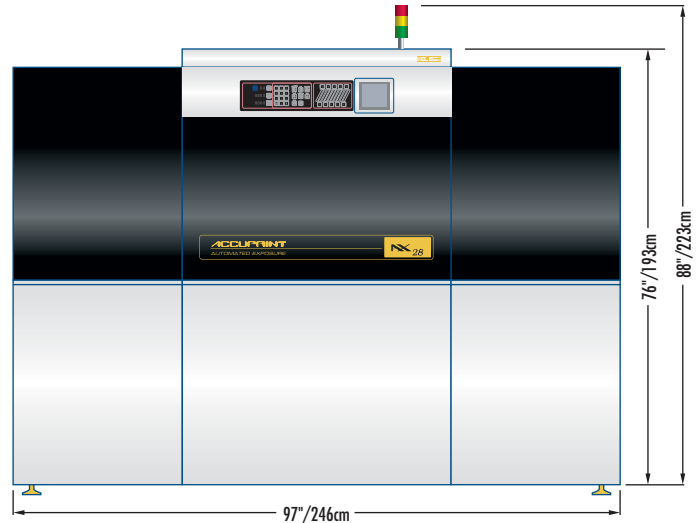
- Active registration system alignment tolerance
 - Programmable tolerance
 - 4 Point Process Deviation position optimization algorithm
 - Accuracy +/- 10 microns (0.0004") "best fit"
- Camera alignment of top image, bottom image, and panel front-to-back registration
- Image to panel alignment
 - a) Align to holes
 - b) Align to etched pattern
 - c) Align to laser etched or skived pattern
- Image front to back to panel
 - a) Align to holes
 - b) Align to etched pattern
 - c) Align to laser etched or skived pattern
- Non-registered index and print mode

Exposure Source

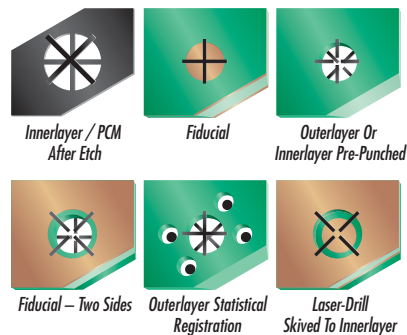
- OLEC Point Source Optics or Hybrid Collimation
- Double-sided exposure
- Two 8 kW 3 level light units. Selectable low (2.5 kW), medium (4 kW) and high power (8 kW) (5kW-3 level exposure systems available on request)
- Interchangeable optics optimized for speed or resolution
- 3 available spectral output lamps
- Lamp change time typically 5 minutes per lamp
- Standard uniformity +/- 10%
- Exposure control, light integration, integrator range 0 to 9999 units, selectable – digitally calibration to mJ/cm²
- Production rate from 120 – 240 exposures/hour

Exposure Frame

- Glass Tooling
 - Configured for image size range and artwork size
 - 10 mm high transmission glass
- Image Capacity (typical configuration)
 - Full image size 610mm x 711mm (24" x 28")
 - Larger sizes are available
- Soft contact 8-12 inches of Hg, monitored and alarmed
- Artwork setup time < 3 minutes



AX28 Registration



High accuracy alignment of top film, bottom film, and panel.



1850 E. St. Andrew Place, Santa Ana, CA 92705, USA
 Phone 714 258 5600 • Fax 714 258 5601
 Email info@olec.com • www.olec.com